



तमिलनाडु के लिए राज्य

स्तरीय समग्र कृषि-मौसम

परामर्श बुलेटिन

**State Composite Agrometeorological Advisory  
Bulletin for Tamil Nadu and Puducherry  
Bulletin No. 039/2024**

For the period 0830 IST, 14<sup>th</sup> May 2024 to

0830 IST, 19<sup>th</sup> May 2024

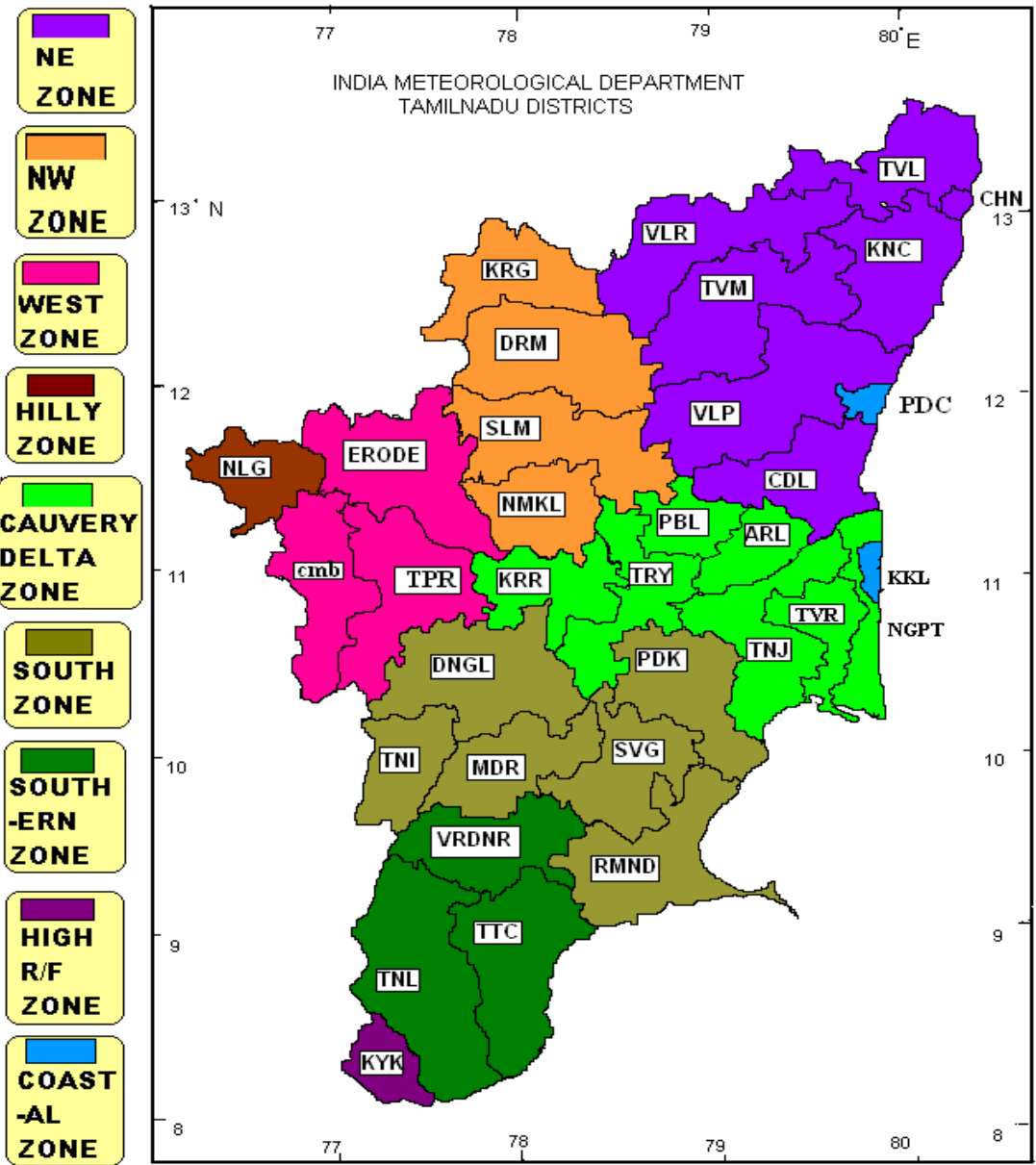
**Issued on Tuesday, 14<sup>th</sup> May 2024**

Issued by

DDGM, Regional Meteorological Centre, India Meteorological Department,  
Chennai in collaboration with TNAU and nine AMFU's of Agro climatic Zones of  
the Tamil Nadu state

## Agro climatic zones of the state

| Sl. No | Agro climatic zone | Districts   | Agro met field Unit (AMFU) location |
|--------|--------------------|---|-------------------------------------|
| 1      | Northeastern zone  | Kanchipuram, Tiruvallur, Cuddalore<br>Tiruvannamalai, Chennai, Villupuram ,<br>Vellore    | Chennai                             |
| 2      | Northwestern zone  | Dharmapuri, Krishnagiri, Salem and<br>Namakkal  | Namakkal                            |
| 3      | Western Zone       | Erode, Tiruppur and Coimbatore,   | Coimbatore,                         |
| 4      | Cauvery Delta zone | Thanjavur, Nagapattinam, Tiruvarur,<br>Karur, Perambalur, Ariyalur and<br>Tiruchirapalli. | Adudurai                            |
| 5      | Southern zone      | Virudhunagar, Tirunelveli and<br>Thoothugudi  | Kovilpatti                          |
| 6      | South Zone         | Pudukkottai, Madurai, Dindigul, Theni,<br>Ramanathapuram and Sivagangai                   | Kannivadi                           |
| 7      | High rainfall zone | Kanyakumari   | Pechiparai                          |
| 8      | Hilly zone         | Nilgiris  | Ooty                                |
| 9      | Coastal Zone       | Karaikal and Pondicherry  | Karaikal                            |



**Past Weather Summary for the period 10.05.24 to 13.05.24 for the State of Tamilnadu & Puducherry**

**Temperature:**

Maximum Temperature of range 34°C – 40°C prevailed over the state. Kodaikanal and Uthagamandalam recorded Maximum temperature range 20°C – 25°C during the period.

Minimum temperature of range 23°C - 30°C prevailed over the State. Kodaikanal and Uthagamandalam recorded Minimum temperature of range 13°C - 14°C during the same period.

**Spatial distribution of Rainfall**

| <b>Spatial distribution of Rainfall</b> | <b>Tamil Nadu</b>            | <b>Puducherry</b>                                 |
|---|------------------------------|---|
| <b>Widespread (Most places)</b>         | --                           | --  |
| <b>Fairly widespread (Many places)</b>  | --                           | --  |
| <b>Scattered (Few Places)</b>           | <b>11.05.24 and 13.05.24</b> | --  |
| <b>Isolated (One or Two Places)</b>     | <b>10.05.24 and 12.05.24</b> | --  |
| <b>Dry</b>                              | --                           | <b>10.05.24 , 11.05.24, 12.05.24 and 13.05.24</b> |

**Chief Amounts of Rainfall (in cms):-**

**10.05.24 :** Sothuparai (dist Theni) 13, Periyakulam (dist Theni) , Peraiyur (dist Madurai) 9 each, Watrap (dist Virudhunagar) 8, Manjalar (dist Theni), Valparai PAP (dist Coimbatore), Valparai Taluk Office (dist Coimbatore), Perunchani Dam (dist Kanniyakumari) 6 each, Puthan Dam (dist Kanniyakumari), Periyar (dist Theni), Srivilliputhur (dist Virudhunagar), Kodivery (dist Erode), Kil Kotagiri Estate (dist The Nilgiris), Anaimalai Taluk Office (dist Coimbatore), Elumalai (dist Madurai), Pilavakkal\_Periyar Dam (dist Virudhunagar), Adayamadai (dist Kanniyakumari) 5 each, Vattamalai Resorvoir (dist Tiruppur), Suralacode (dist Kanniyakumari), Kavundapadi (dist Erode), Rajapalayam (dist Virudhunagar) 4 each, Valparai PTO (dist Coimbatore), Nambiyur (dist Erode), Kodaikanal (dist Dindigul), Mukkadal Dam (dist Kanniyakumari), Bhavani (dist Erode), Cincona (dist Coimbatore), Kothagiri (dist The Nilgiris), Kodaikanal boat club(dist Dindigul), Kunderipallam (dist Erode) 3 each, Kumarapalayam (dist Namakkal), Aranmanaipudur (dist Theni), PWD Vaarappatti (dist Coimbatore), Geddai (dist The Nilgiris), Azhiyar (dist Coimbatore), Madukkarai Taluk Office (dist Coimbatore), Kinnakorai (dist The Nilgiris), Vaigai Dam (dist Theni), Pollachi (dist Coimbatore), Yercaud\_ISRO AWS (dist Salem) 2 each, PWD Makkinampatti (dist Coimbatore), Vellakoil (dist Tiruppur), Podanur Railway Station (dist Coimbatore), Anaipalayam (dist Karur), Coimbatore South (dist Coimbatore), Adar Estate (dist The Nilgiris), Sholayar (dist Coimbatore), Andipatti (dist Theni), Ottanchatram (dist Dindigul), Gobichettipalayam (dist Erode),

Avinasi (dist Tiruppur), Siruvani Adivaram (dist Coimbatore), Barwood (dist The Nilgiris), Yercaud (dist Salem), Bodinaickanur (dist Theni), Kinathukkadam (dist Coimbatore), Papanasam (dist Tirunelveli), Thirumoorthis Dam (dist Tiruppur), Manalmedu (dist Mayiladuthurai), Pennagaram (dist Dharmapuri), Mambzhathuraiyaru (dist Kanniyakumari), Perundurai (dist Erode), Anaikedanku (dist Kanniyakumari), Thuckalay (dist Kanniyakumari), Gudalur Bazar (dist The Nilgiris), Madathukulam (dist Tiruppur), Ramanadhi Dam Section (dist Tenkasi), Thirumoorthis IB (dist Tiruppur), Veerapandi (dist Theni) 1 each.

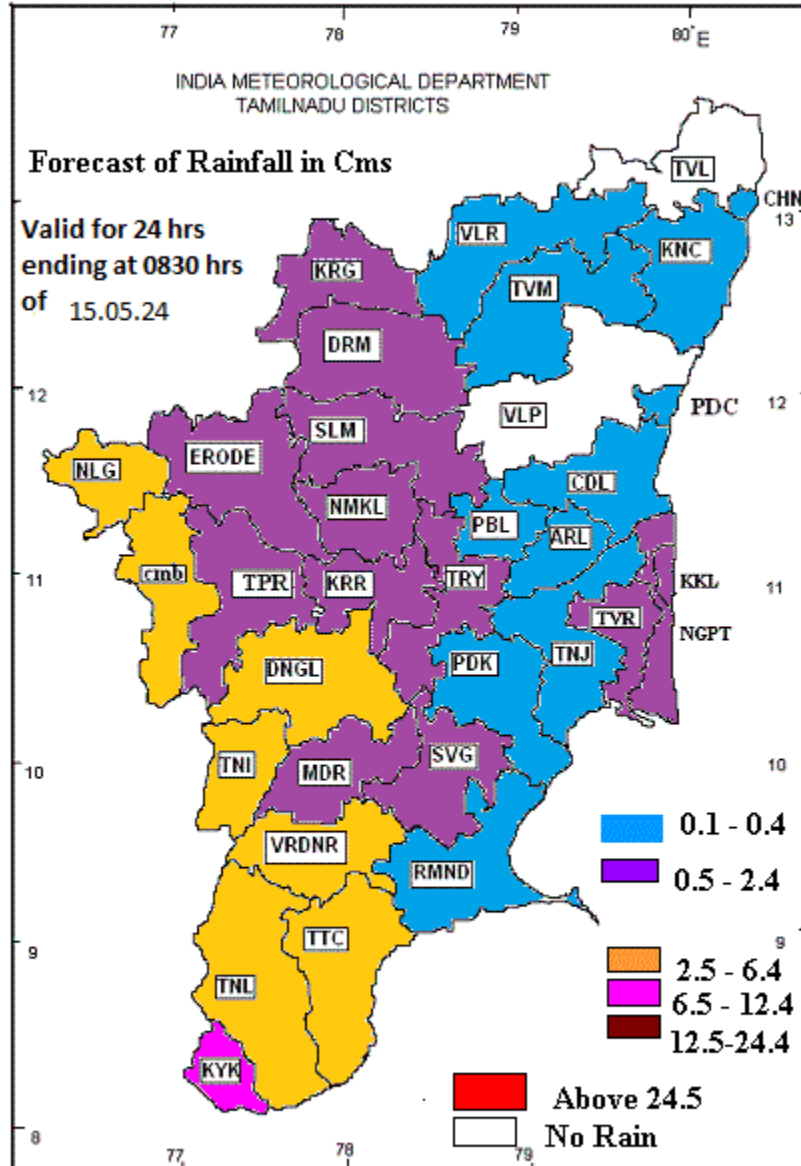
**11.05.24** : Pennagaram (dist Dharmapuri) 10, Hogenekal (dist Dharmapuri) 8, Samayapuram (dist Thiruchirappalli) 7, Usilampatti (dist Madurai) , Musiri (dist Thiruchirappalli) 6 each, Ammapettai (dist Erode), Perunchani Dam (dist Kanniyakumari), Mettupatti (dist Madurai), Kallandri (dist Madurai), Devimangalam (dist Thiruchirappalli), Puthan Dam (dist Kanniyakumari), Upper Gudalur (dist The Nilgiris), Aruppukottai (dist Virudhunagar) 5 each, Alangudi (dist Pudukkottai) , Perungalur (dist Pudukkottai) , Pulipatti (dist Madurai) 4 each, Tirumayam (dist Pudukkottai), Kovilpatti (dist Thoothukudi), Tiruvadana (dist Ramanathapuram), Kayathar (dist Thoothukudi), Kuppanampatti (dist Madurai), Periyapatti (dist Madurai), Anaimaduvu Dam (dist Salem), Sivalogam Chittar II (dist Kanniyakumari), Suralacode (dist Kanniyakumari), Kadambur (dist Thoothukudi) 3 each, Kovilankulam (dist Virudhunagar), Aruppukottai KVK AWS (dist Virudhunagar), Tirumangalam (dist Madurai), Vamban KVK AWS (dist Pudukkottai), Thenparanadu (dist Thiruchirappalli), Varattupallam (dist Erode), Kallikudi (dist Madurai), Gudalur Bazar (dist The Nilgiris), Malaiyur (dist Pudukkottai), Thuraiyur (dist Thiruchirappalli), Neivasal Thenpathi (dist Thanjavur), Chittampatti (dist Madurai), Kalial (dist Kanniyakumari), Arimalam (dist Pudukkottai), Thirumanur (dist Ariyalur), Thiruthuraipoondi (dist Thiruvarur), Harisan Malayalam Ltd. (dist The Nilgiris), Manamelkudi (dist Pudukkottai), Kulithalai (dist Karur), Valparai PAP (dist Coimbatore), Hosur AWS (dist Krishnagiri), Nannilam (dist Thiruvarur), Dindigul (dist Dindigul), Valparai Taluk Office (dist Coimbatore), Sirugamani KVK AWS (dist Thiruchirappalli) 2, Madurai city (dist Madurai), Madurai North (dist Madurai), Pulivalam (dist Thiruchirappalli), Chittar-I (dist Kanniyakumari), Thali (dist Krishnagiri), Tallakulam (dist Madurai), Melur (dist Madurai), Ponnaniyar Dam (dist Thiruchirappalli), Taluk Office Pandalur (dist The Nilgiris), Vathalai Anaicut (dist Thiruchirappalli), Naduvattam (dist The Nilgiris), Veerapandi (dist Theni), Hosur (dist Krishnagiri), Manapparai (dist Thiruchirappalli), Krishnarayapuram (dist Karur), Kothagiri (dist The Nilgiris), Thuckalay (dist Kanniyakumari), Panchapatti (dist Karur), Elanthakuttai Medu (dist Erode), Ketti (dist The Nilgiris), Kalavai PWD (dist Ranipet), BDO Shoolagiri (dist Krishnagiri), Pechiparai (dist Kanniyakumari), Kavundapadi (dist Erode), Echanviduthi (dist Thanjavur), Chinnar Dam (dist Krishnagiri), Upper Bhavani (dist The Nilgiris), Madurai Airport (dist Madurai), Adar Estate (dist The Nilgiris), Vaippar (dist Thoothukudi), Barwood (dist The Nilgiris), Ayyampettai (dist Thanjavur), Kudimiyamalai (dist Pudukkottai), Thuvakudi Imti (dist Thiruchirappalli) 1 each.

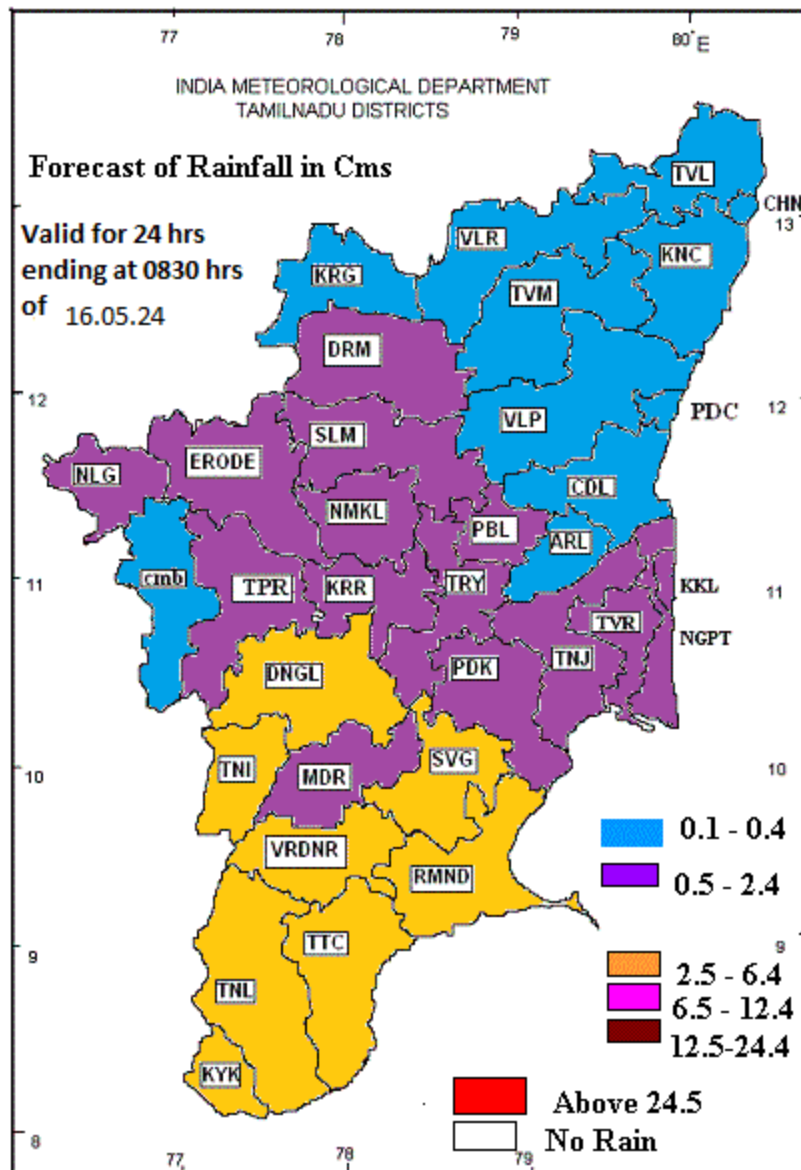
**12.05.24** : Pamban (dist Ramanathapuram) 7, Manamadurai (dist Sivagangai), Thalavadi (dist Erode), PWD Makkinampatti (dist Coimbatore) 6 each, Paramakudi (dist Ramanathapuram), Salem (dist Salem), Sular (dist Coimbatore) 5 each, Natham (dist Dindigul), Rasipuram (dist Namakkal), Sivalogam (dist Kanniyakumari), Siruvani Adivaram (dist Coimbatore) each, Pandavaiyar Head (dist Thiruvarur), Edapadi (dist Salem), Valparai PAP (dist Coimbatore), Thirparappu (dist Kanniyakumari), Tirupuvanam (dist Sivagangai), Valparai Taluk Office (dist Coimbatore), Thiruchirappalli Junction (dist Thiruchirappalli), Viraganur (dist Madurai), Thangachimadam (dist Ramanathapuram) 3 each, Maniyachi (dist Thoothukudi), Azhiyar (dist Coimbatore), Nannilam (dist Thiruvarur), Illayangudi (dist Sivagangai), Bhavani (dist Erode), Coimbatore AP (dist Coimbatore), Manapparai (dist Thiruchirappalli), Kamudhi (dist Ramanathapuram), Perunchani Dam (dist Kanniyakumari), Puthan Dam (dist Kanniyakumari), Suralacode

(dist Kanniyakumari), Aranmanaipudur (dist Theni), Needamangalam (dist Thiruvarur), Kamudhi ARG (dist Ramanathapuram), Danishpet (dist Salem) 2 each, Mambzhathuraiyaru (dist Kanniyakumari), Anaikedanku (dist Kanniyakumari), Kadambur (dist Thoothukudi), Chittar-I (dist Kanniyakumari), PWD Vaarappatti (dist Coimbatore) (dist Perambalur), Sivagiri (dist Tenkasi), Sandhiyur KVK AWS (dist Salem), Uttamapalayam (dist Theni), Kumarapalayam (dist Namakkal), Pechiparai (dist Kanniyakumari), Rameswaram (dist Ramanathapuram), Vembakottai (dist Virudhunagar), Pudukot (dist Thoothukudi), Kovilpatti (dist Thoothukudi), Karuppanadhi Dam (dist Tenkasi), Tiruchirappalli Airport (dist Thiruchirappalli), Chinnakalar (dist Coimbatore), Madurai Airport (dist Madurai), Vettikadu (dist Thanjavur (dist Kanniyakumari), Thammampatty (dist Salem), Mettur (dist Salem), Vazhapadai ARG (dist Salem), Yercaud AWS (dist Salem) 1 each.

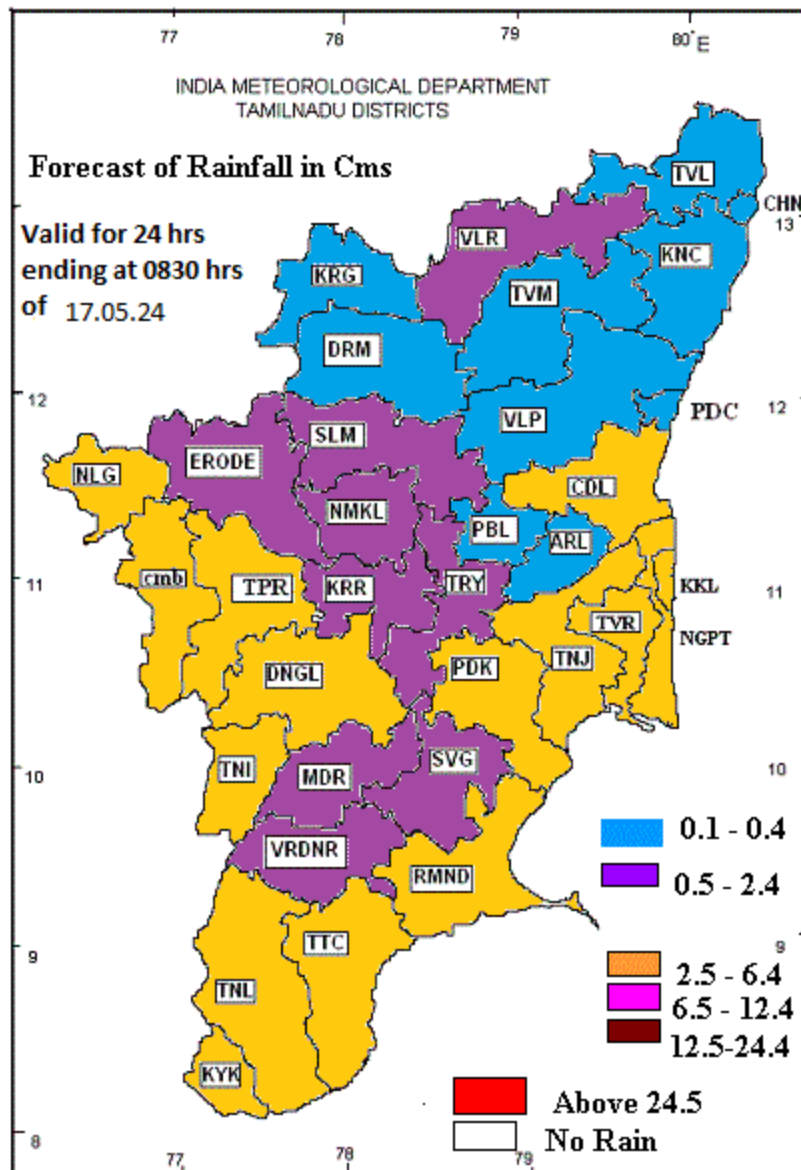
**13.05.24 :** Sivagiri (dist Tenkasi) 12, Chittar-I (dist Kanniyakumari), Periyakulam (dist Theni) 8 each, Elumalai (dist Madurai), Mandapam (dist Ramanathapuram) 7 each, Kuppanampatti (dist Madurai) 6, Andipatti (dist Theni), Thalavadi (dist Erode), Barwood (dist The Nilgiris) 5 each, Pechiparai (dist Kanniyakumari), Denkanikottai (dist Krishnagiri), Valparai PAP (dist Coimbatore), Mannargudi (dist Thiruvarur), Kodaikanal Boat club (dist Dindigul) 4 each, Valparai Taluk Office (dist Coimbatore), Gudalur Bazar (dist The Nilgiris), Thirparappu (dist Kanniyakumari), Avinasi (dist Tiruppur), Upper Gudalur (dist The Nilgiris), Perunchani Dam (dist Kanniyakumari), Puthan Dam (dist Kanniyakumari), Thangachimadam (dist Ramanathapuram), Periyanaickenpalayam (dist Coimbatore), Usilampatti (dist Madurai), Valangaiman (dist Thiruvarur) 3 each, Naduvattam (dist The Nilgiris), Devala (dist The Nilgiris), Thammampatty (dist Salem), Budalur (dist Thanjavur), Sivalogam (dist Kanniyakumari), Adanakottai (dist Pudukottai), Kunderipallam (dist Erode), Pillur Dam Mettupalayam (dist Coimbatore), Thenkasi (dist Tenkasi), Amaravathy Dam (dist Tiruppur), Chinnakalar (dist Coimbatore), Alangayam (dist Tirupathur), Balamore (dist Kanniyakumari), Sholayar (dist Coimbatore), Karaikudi (dist Sivagangai), Yercaud (dist Salem), Tirupuvanam (dist Sivagangai), Burliar (dist The Nilgiris), Glenmorgan (dist The Nilgiris), Kil Kotagiri Estate (dist The Nilgiris), Vaigai Dam (dist Theni), Coonoor PTO (dist The Nilgiris), Coimbatore AP (dist Coimbatore), Perungalur (dist Pudukkottai), Sothuparai (dist Theni), PWD Makkinampatti (dist Coimbatore), Tirupathur Collector office AWS (dist Tirupathur) 2 each, Sethiathope (dist Cuddalore), Surangudi (dist Thoothukudi), Kilanilai (dist Pudukkottai), Kudimiyanmalai (dist Pudukkottai), PWD (dist Tiruppur), Salem (dist Salem), Mohanur (dist Namakkal), Kalial (dist Kanniyakumari), Suralacode (dist Kanniyakumari), Nambiyur (dist Erode), Kuzhithurai (dist Kanniyakumari), Perundururai (dist Erode), Thali (dist Krishnagiri), Gadana Dam (dist Tenkasi), Arimalam (dist Pudukkottai), Bodinaickanur (dist Theni), PWD Vaarappatti (dist Coimbatore), Tirupattur (dist Tirupathur), Anjatti (dist Krishnagiri), Ayikudi (dist Tenkasi), Sethu Bhasakar College AWS (dist Sivaganga), Tenkasi AWS (dist Tenkasi) 1 each.

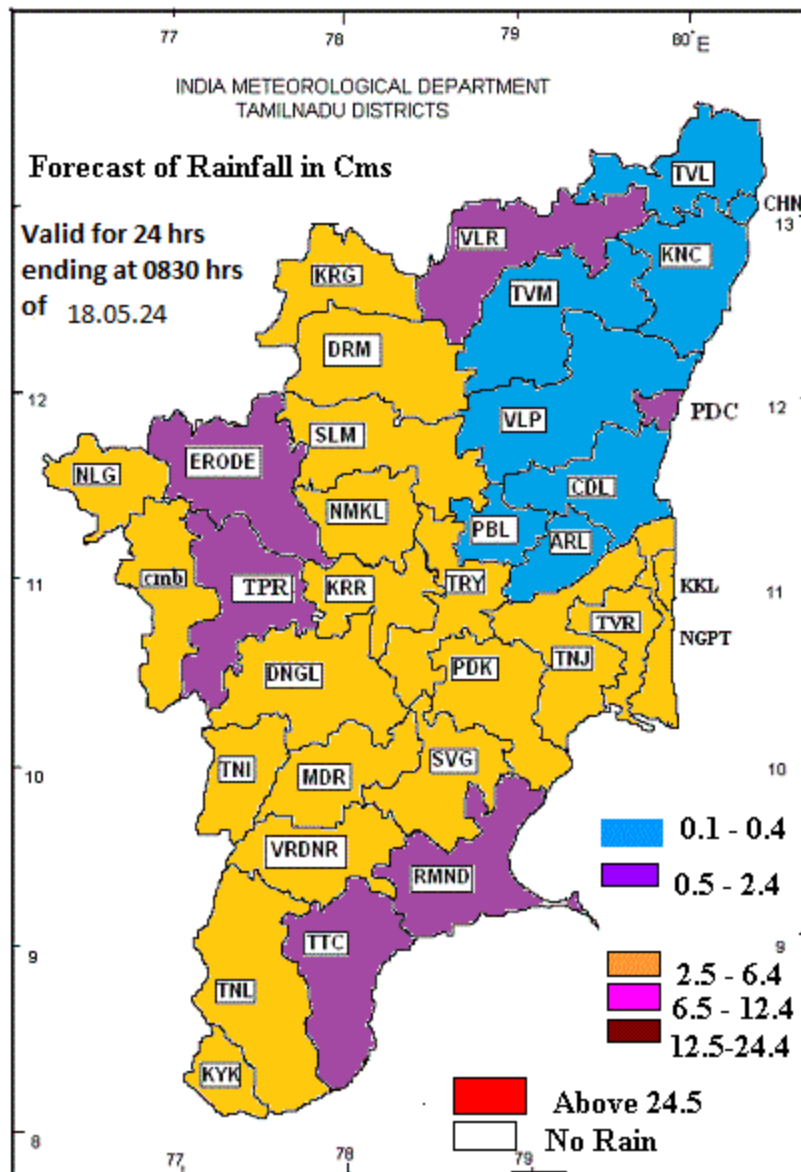
**DISTRICT LEVEL ENSEMBLE WEATHER FORECAST ISSUED ON: 14.05.24  
VALID FOR THE NEXT 5 DAYS**

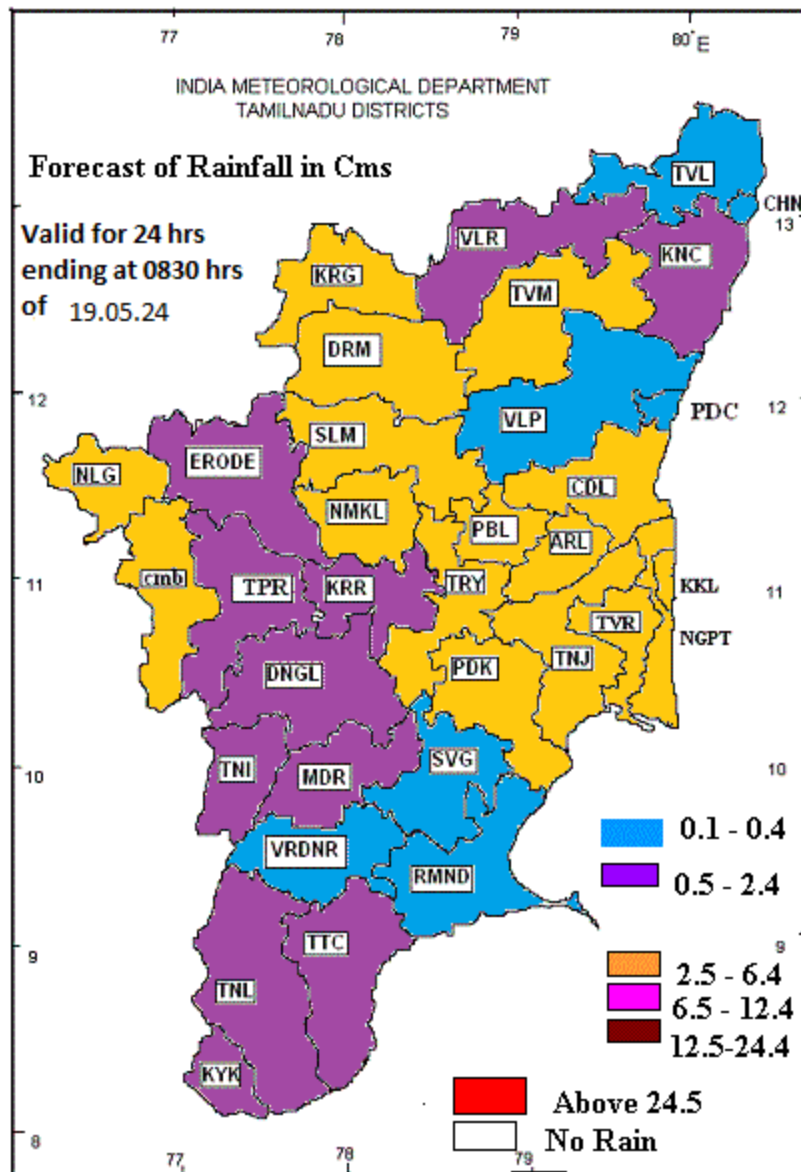












## District-wise Agromet Advisories

### **Chennai, Kancheepuram, Villupuram, Tiruvannamalai, Tiruvallur, Vellore and Cuddalore**

#### **SMS Advisory:**

(17.05.2024-19.05.2024) Heavy rain is likely to occur at isolated places over Krishnagiri, Tirupattur, Tiruvannamalai, Kallakurichi and Cuddalore districts of Tamilnadu.

#### **Livestock Advisory:**

1. The farmers should avoid allowing the animals to graze in hot parts of the day.
2. Sheep and goat should be dewormed by using suitable anthelmintic by consulting with Local veterinary doctor.
3. Increasing the frequency of feeding from three to four times per day to high yielding crossbreed, dairy cattle would nominally increase milk production and at the same time will reduce the heat stress.
4. The dairy buffaloes are very much prone to summer sub fertility, due to higher ambient air temperature. To prevent this proper sheltering with cooling facility are necessary.
5. White pigs meant for fattening purpose which are fed with high fat containing swill feed would suffer heat load during digestion, during summer season. Hence to prevent this fat containingswill feed should be fed during late evening hours.
6. Rabbitaries with asbestos/metal roofs will experience more heat during summer, hence covering the roof with coconut leaves or gunny bags and splashing water over them will reduce the inner micro climate of rabbit shed.
7. Provision of cool wholesome drinking water to poultry during summer is essential.

#### **Agricultural advisory**

##### **Rice:**

Application of Azospirillum @2.5 kg /ha, phosphobacteria @ 2.5kg / ha and KRB @ 22.5 kg /ha mixed with 50kg of FYM or forest soil and broadcast after 10-15 days of transplanting. Application of PPM @ 1.5% foliar spray of avoid drought.

Weed management in wet direct sown rice: Sowing with drum seeder and cono weeding at 10,20 and 30 DAS or Pre emergence application of Pretilachlor 0.75 kg/ha on 8DAS followed by one hand weeding on 40 DAS or Application of Pyrazosulfuron ethyl @ 20g/ha on 3 DAS followed by cono weeding on 25 DAS or Application of Pendimethalin 1 kg /ha at 3 DAS followed by post emergence application bispyribac sodium 25 gram /ha at 25 DAS with one hand weeding at 45DAS.

Due to prevailing weather condition chances of thrips infestation in paddy field. Tocontrol spray thiamethoxam 25% WG 100 g/ha or dimethoate 1.5ml/l. 2. Due to prevailingweather condition brown plant leafhopper infestation is found in paddy crop. SymptomsNymphs and adults congregate at the base of the plant above the water level. Affected plantdries up and gives a scorched appearance called "hopper burn". Circular patches of dryingand lodging of matured plant. To control spray carbosulfan 400 ml/ac + imidaclopride 40ml/ac or pymetrozine 120 g/ac with wetting agent.

##### **Groundnut:**

Treat the groundnut seeds with Trichoderma @ 4g/kg just before sowing. Groundnut growing farmers reduce the root rot infection treat the seeds with carbendazim@ 2.0 g/kg of seed 24 hours before sowing (or) Trichoderma viride @ 4.0 g/kg of seed (or) bacillus subtilis @ 10 g/kg seed.

##### **Coconut:**

In new coconut plantings the hybrids Dwarf × Tall or Tall × Dwarf may be used. Mango:

The mango crop harvesting is in progress. The fruit may be harvested with 1cm stalk to avoid flow of latex.

The fruits may be treated with 2ml /lit Ethrel along with few sodium hydroxide pellets for uniform ripening and color development.

**Brinjal:**

There are possibilities of red spider mite in Brinjal crop. For management farmers are advised to spray wettable sulphur 50 WP 2g/lit or dicofol 18.5 EC 2.5 ml/lit.

## Coimbatore

Agro Advisory

| Crop      | Stage            | Advisory   |
|-----------|------------------|--|
| General   |                  | Moderate to heavy Rainfall is expected during this week in all three western zone districts. The wind speed will be between 4 - 20 km/hr. Irrigation may be postponed based on soil moisture and apply crop residue mulches to all irrigated crops to maintain sufficient soil moisture. Plan for summer ploughing against the slope with soil inverting type ploughs. |
| Rice      | Land preparation | Considering the anticipated rainfall nursery land preparation may be done followed by sowing for short duration rice in assured irrigated areas.   |
| Sorghum   | Vegetative       | With the receipt of anticipated rainfall hand weeding may be done in irrigated Sorghum and apply 50 kg of urea per hectare as second top dressing. Considering the moisture irrigation may be given.   |
| Cumbu     | Vegetative       | With the receipt of anticipated rainfall hand weeding may be done in irrigated cumbu and apply 90 kg of urea per hectare as first top dressing. Considering the moisture irrigation may be given.  |
| Groundnut | Sowing           | This is the right time for sowing of Chithiraipattam rainfed groundnut at Pollachi taluk of Coimbatore district. Field preparation followed by sowing may be done, since rain is anticipated.  |
| Sesamum   | Harvest          | Make suitable arrangement to facilitate air movement in the lodged sesame to avoid seed deterioration after getting good sunlight crop may be harvested and processed.   |
| Sugarcane | Vegetative       | Considering the local circulation due to increased temperature and expected summer rains, provide propping to the sugarcane by tying opposite row to prevent from lodging. With the receipt of rainfall, late season sugarcane setts may be planted to save ground and surface water.  |
| Banana    |                  | Considering the local circulation and expected summer rains, provide propping to the banana of more than five months old to prevent from lodging.  |
| Turmeric  | Sowing           | By utilizing rainfall, dibbling in turmeric rhizomes may be continued by providing proper drainage.  |
| Tapioca   |                  | By utilizing the received and anticipated rainfall harvest may be programmed in Tapioca.   |
| Grapes    |                  | For monsoon crop of grapes, pruning may be done since weather is favourable for this operation   |
| Coconut   |                  | Summer rains during next two months may be harvested in root zone of   |

|                  |  |   |
|------------------|--|---|
|                  |  | coconut by deepening the tree basin with inward slopes. Till then, ensure to provide 100 liters of water per tree per day to maintain the productivity. |
| Animal Husbandry |  | Rain is expected during this week. Check the roofs of animal shed and repair leakages.  |

#### SMS advisory

Rainfall is expected during this week, summer ploughing against can be done the slope to harvest summer rains.

## Erode

#### Agro Advisory

| Crop      | Stage            | Advisory   |
|-----------|------------------|--|
| General   |                  | Moderate to heavy Rainfall is expected during this week in all three western zone districts. The wind speed will be between 4 - 20 km/hr. Irrigation may be postponed based on soil moisture and apply crop residue mulches to all irrigated crops to maintain sufficient soil moisture. Plan for summer ploughing against the slope with soil inverting type ploughs. |
| Rice      | Land preparation | Considering the anticipated rainfall nursery land preparation may be done followed by sowing for short duration rice in assured irrigated areas.   |
| Sorghum   | Vegetative       | With the receipt of anticipated rainfall hand weeding may be done in irrigated Sorghum and apply 50 kg of urea per hectare as second top dressing. Considering the moisture irrigation may be given.   |
| Cumbu     | Vegetative       | With the receipt of anticipated rainfall hand weeding may be done in irrigated cumbu and apply 90 kg of urea per hectare as first top dressing. Considering the moisture irrigation may be given.  |
| Sesamum   | Harvest          | Make suitable arrangement to facilitate air movement in the lodged sesame to avoid seed deterioration after getting good sunlight crop may be harvested and processed.   |
| Sugarcane | Vegetative       | Considering the local circulation due to increased temperature and expected summer rains, provide propping to the sugarcane by tying opposite row to prevent from lodging.<br>With the receipt of rainfall, late season sugarcane setts may be planted to save ground and surface water.   |
| Banana    |                  | Considering the local circulation and expected summer rains, provide propping to the banana of more than five months old to prevent from lodging.  |
| Turmeric  | Sowing           | By utilizing rainfall, dibbling in turmeric rhizomes may be continued by providing proper drainage.  |
| Tapioca   |                  | By utilizing the received and anticipated rainfall harvest may be programmed in Tapioca.   |
| Coconut   |                  | Summer rains during next two months may be harvested in root zone of coconut by deepening the tree basin with inward slopes. Till then, ensure   |

|                  |  |  |
|------------------|--|--|
|                  |  | to provide 100 liters of water per tree per day to maintain the productivity.          |
| Animal Husbandry |  | Rain is expected during this week. Check the roofs of animal shed and repair leakages. |

SMS advisory

Rainfall is expected during this week, summer ploughing against can be done the slope to harvest summer rains.

## Tiruppur

Agro Advisory

| Crop             | Stage      | Advisory   |
|------------------|------------|--|
| General          |            | Moderate to heavy Rainfall is expected during this week in all three western zone districts. The wind speed will be between 4 - 20 km/hr. Irrigation may be postponed based on soil moisture and apply crop residue mulches to all irrigated crops to maintain sufficient soil moisture. Plan for summer ploughing against the slope with soil inverting type ploughs. |
| Sorghum          | Vegetative | With the receipt of anticipated rainfall hand weeding may be done in irrigated Sorghum and apply 50 kg of urea per hectare as second top dressing. Considering the moisture irrigation may be given.   |
| Sesamum          | Harvest    | Make suitable arrangement to facilitate air movement in the lodged sesame to avoid seed deterioration after getting good sunlight crop may be harvested and processed.   |
| Sugarcane        | Vegetative | Considering the local circulation due to increased temperature and expected summer rains, provide propping to the sugarcane by tying opposite row to prevent from lodging. With the receipt of rainfall, late season sugarcane setts may be planted to save ground and surface water.  |
| Tapioca          |            | By utilizing the received and anticipated rainfall harvest may be programmed in Tapioca.   |
| Coconut          |            | Summer rains during next two months may be harvested in root zone of coconut by deepening the tree basin with inward slopes. Till then, ensure to provide 100 liters of water per tree per day to maintain the productivity.   |
| Animal Husbandry |            | Rain is expected during this week. Check the roofs of animal shed and repair leakages.   |

SMS advisory

Rainfall is expected during this week, summer ploughing against can be done the slope to harvest summer rains.

## Nilgiris

### General Advisory:

Rather heavy rainfall is expected for third, fourth & fifth day hence vegetable farmer's are requested to do drainage facilities drain the excess water in vegetable field. Seeds can be treated with *Trichoderma viride* @ 4g/kg or *Bacillus subtilis* @ 10g/kg to manage seed and soil borne pathogens. Further, soil testing has to be done before any cropping programme.

### SMS Advisory:

To manage leaf spot in Beetroot crop, foliar spray of mancozeb @ 2 g/l on 45, 60 and 75 days after planting is recommended. Spray may be given during rain free period.

### Horticulture Specific Advisory:

| Horticulture (Stage)       | Horticulture Specific Advisory  |
|----------------------------|---|
| CARROT (Sowing)            | For the management of nematode in carrot, soil application of neem cake @ 1 ton/ha at planting. Biofumigation of mustard plants followed by application of neem cake @ 250kg/ha along with <i>Purpureocillium lilacinum</i> @ 5kg/ha is recommended. Spray may be given during rain free period.  |
| POTATO (Vegetative )       | To manage early blight in potato, foliar application of hexaconazole 2% SC @ 0.06% or mancozeb @ 2 g/l or chlorothalonil @ 2 g/l at 45, 60 and 75 days after planting is recommended. Spray may be given during rain free period.   |
| BLACK PEPPER (Vegetative ) | To manage wilt in pepper, farmers are advised to do the application of copper oxychloride @ 0.2 % (soil drenching) or potassium phosphonate @ 0.3% or metalaxyl @ 0.1 % is recommended. Spray may be given during rain free period.   |
| TEA (Vegetative )          | To manage mites in tea crop, foliar application of Azadirachtin 1.0% EC (neem based) 2.0 ml/lit or propargite 57 % EC 2.0 ml/lit is recommended. Spray may be given during rain free period.  |
| Horticulture (Stage)       | Horticulture Specific Advisory  |
| GARLIC (Vegetative )       | Foliar application of water-soluble micronutrient mixture @ 0.5 g/liter of water during 30, 45 and 60 days after planting may be done to increase the Garlic bulb yield. To manage leaf spot / purple blotch in garlic crop, foliar application of mancozeb @ 2 g/l or copper oxychloride @ 2.5 g/l is recommended. Spray may be given during rain free period. |

## Thoothukudi



| Crop             | Stage                    | Agromet Advisory   |
|------------------|--------------------------|--|
| Irrigated crops  | Water management         | Rainfall is predicted. Farmers are advised to postpone the irrigate  |
| Plant protection | Plant protection         | Avoid spraying   |
| Summer ploughing | Moisture conservation    | Farmers are requested for summer ploughing to hold the rainfall in future.   |
| Paddy            | Panicle initiation stage | Postpone the irrigate  |
| Banana           | All the stage            | Farmers are advised to practice propping and earthing up.  |
| Livestock        | Rainfall and thunder     | Proper shelter to be maintained to avoid entry of rainfall and disease spread. Keep animals away from open water, pond or river. |
| Human            | Rainfall and thunder     | Avoid shelter under trees and Crouch down with feet together and head down to make yourself a smaller target.                    |

SMS: Rain: 32,29,31,5&6 mm. postpone the irrigate. Excavate proper drainage channel. Banana - practice propping and earthing up. Avoid shelter under trees and metal farm equipment.

## Virudhunagar

| Crop                            | Stage                 | Agromet Advisory   |
|---------------------------------|-----------------------|--|
| Irrigated crops                 | Water management      | Rainfall is predicted. Farmers are request to postpone the irrigation. Excavate proper drainage channel to avoid water stagnation. |
| Rainfed / irrigated crops       | Plant protection      | Avoid spraying.  |
| Summer ploughing                | Moisture conservation | Farmers are requested for summer ploughing to hold the anticipated rainfall.   |
| Paddy                           | Tillering stage       | Farmers are advised to postpone the irrigation.  |
| Rice fallow pulses (Black gram) | Flowering stage       |  |
| Banana                          | All the stage         | Farmers are advised to practice propping and earthing up.  |
| Livestock                       | Rainfall and thunder  | Proper shelter to be maintained to avoid entry of rainfall and disease spread. Keep animals away from open water, pond or river.   |
| Human                           | Rainfall and thunder  | Avoid shelter under trees and Crouch down with feet together and head down to make yourself a smaller target.                      |

SMS: Rain: 30,34,12,35,3 mm. Postpone the irrigation and spraying. Excavate proper drainage channel. Banana - practice propping and earthing up. Avoid shelter under trees and metal farm equipment.

## Tirunelveli

| Crop            | Stage            | Agro met Advisory  |
|-----------------|------------------|--|
| Irrigated crops | Water management | Rainfall is predicted. Farmers are request to postpone the irrigation. Excavate proper drainage channel to avoid water stagnation. |

|                  |                          |  |
|------------------|--------------------------|--|
| Irrigated crops  | Plant protection         | Avoid spraying.  |
| Summer ploughing | Moisture conservation    | Farmers are requested for summer ploughing to hold the anticipated rainfall.   |
| Paddy            | Vegetative stage         | Maintain the water level to avoid lodging of crop.   |
|                  | Flowering stage          |  |
|                  | Panicle initiation stage |  |
| Vegetables       | Rainfall                 | Harvest the products as earlier to avoid the rainfall damage   |
| Black gram       | Flowering stage          | Proper drainage channel to avoid water stagnation.   |
| Banana           | All the stage            | Farmers are advised to practice propping and earthing up.  |
| Livestock        | Rainfall and thunder     | Proper shelter to be maintained to avoid entry of rainfall and disease spread. Keep animals away from open water, pond or river. |
| Human            |                          | Avoid shelter under trees and Crouch down with feet together and head down to make yourself a smaller target.                    |

SMS: Rain:28,29,32,33&10 mm. Postpone the irrigation and spraying. Excavate proper drainage channel.  
Banana - practice propping and earthing up. Avoid shelter under trees and metal farm equipment.

## **Ariyalur, Karur, Nagapattinam, Perambalur, Thanjavur, Tiruvarur and Tiruchirapalli**

### Agro Advisory

| Crop    | Stage        | Advisory   |
|---------|--------------|--|
| General |              | Raising of green manure crops like daincha, sunnhemp and kolinji can be done to utilizing the rainfall.                  |
|         |              | Summer ploughing can be done by utilizing the rainfall expected upcoming days and to control weeds and larva of insects. |
|         |              | Avoid application of fertilizers and insecticides to the crops.  |
| Rice    | Nursery      | Farmers are advised to provide adequate drainage facilities to rice nursery due to light to moderate rainfall forecast.  |
| Banana  |              | Provide support with wooden poles to avoid lodging of tree due to rain and wind.   |
| Cattle  | Cow and Goat | Exposure of calves and kids to rain should be avoided to prevent from pneumonia attack in view of expected high rain.    |

### SMS advisory

Farmers are advised to provide adequate drainage facilities to rice nursery due to light to moderate rainfall forecast.

## Dindigul

**SMS Advisory** Chances of Moderate rain during 15, 16, 17, 18 & 19 May. Maximum temperature would be in the range of 33°C to 38°C and the minimum temperature would be between 22°C - 26°C. Cloudy sky will appear for the next five days. Wind is expected with the speed of 4-6 Kmph from, Northeast, Southeast, West & Southwest directions.

### General Advisory:

Heavy rain is likely to occur at isolated places over the district during 15, 16, 17 & 18 May 2024. Farmers are advised to act swiftly to repair the water channels, farm ponds and other water bodies to harvest the rain water. During these days farmers are advised to avoid irrigation, intercultural operations and application of plant protection measures to the standing crops, provide adequate drainage facilities in the fields to avoid water stagnation due to heavy rainfall, do not allow the animals to grazing outside, standing near the trees or electric poles & provide safe shelter.

Thunderstorms & lightning with light to Moderate rain are likely to occur at one or two places over the Tamilnadu during 15 to 19 May 2024. Gusty Wind with a speed of 30 to 50 kmph is expected for the same days. Hence farmers are advised to provide propping in sugarcane and to provide adequate support for crops like Banana, Papaya, Guava and Moringa, to prevent from lodging. For Gourds check the structures /pandhals for damages in the strings and poles and provide adequate support. Do not allow the animals to graze outside, standing near the trees, and don't tie the animals to electric poles. Provide safe shelter.

Rainfall occurred in a few places during the past few days, and rain is also forecasted for the coming days, farmers are advised to start summer plough work to increase the capacity of the soil to absorb the rainwater and by overturning the soil, the sharp rays of sun enters the soil and kills the eggs, larvae, and pupae of soil-borne insects and pests.

### Weather Based Agro-Advisories: (Maize, Moringa & Animal Husbandry).

#### Maize:

The incidence of Corn worms is expected in Maize. The symptoms appear on grains and Larva feeds on silk and developing grains.

To manage this, set up pheromone traps @ 12Nos./hectare.

Also, set up a light trap @ 1No./acre in the field to attract and kill the moths and insects.

Mix Pungam Oil @ 50ml + Iluppai Oil @ 50ml + Neem Oil @ 50ml + Sticky agent @ 10ml with 10 litres of water and spray 2 times at 12-day intervals.

#### Moringa:

The incidence of Pod flies is noticed in Moringa. The symptoms are drying and splitting of fruits from the tip and oozing of gummy exudate from fruit.

Collect and destroy all the fallen and damaged fruits.

Use attractants like citronella oil, eucalyptus oil, vinegar (Acetic acid), dextrose or lactic acid.  
To control this using the biological method, set up pheromone traps at 7Nos./Acre.

Spray insecticides like Nimbecidine @ 3ml/litre at the time of 50% fruit set and 35 days later. Spraying should be done only on non-rainy days.

Animal Husbandry:

Provide B-Complex liquid supplementation through drinking water to poultry birds to combat heat stress.

Farmers are advised to reduce the number of birds in a unit area of poultry shed to overcome the heat stress.

## **Madurai**

SMS Advisory Chances of Moderate rain during 15, 16, 17, 18 & 19 May. Maximum temperature would be in the range of 33°C to 38°C and the minimum temperature would be between 22°C - 26°C. Cloudy sky will appear for the next five days. Wind is expected with the speed of 4-8 Kmph from, Northeast, South & Southwest directions.

General Advisory:

Heavy rain is likely to occur at isolated places over the district on 18 May 2024. Farmers are advised to act swiftly to repair the water channels, farm ponds and other water bodies to harvest the rain water. During these days farmers are advised to avoid irrigation, intercultural operations and application of plant protection measures to the standing crops, provide adequate drainage facilities in the fields to avoid water stagnation due to heavy rainfall, do not allow the animals to grazing outside, standing near the trees or electric poles & provide safe shelter.

Thunderstorms & lightning with light to Moderate rain are likely to occur at one or two places over the Tamilnadu during 15to 19May 2024. Gusty Wind with a speed of 30 to 50 kmph is expected for the same days. Hence farmers are advised to provide propping in sugarcane and to provide adequate support for crops like Banana, Papaya, Guava and Moringa, to prevent from lodging. For Gourds check the structures /pandhals for damages in the strings and poles and provide adequate support. Do not allow the animals to graze outside, standing near the trees, and don't tie the animals to electric poles. Provide safe shelter.

Rainfall occurred in a few places during the past few days, and rain is also forecasted for the coming days, farmers are advised to start summer plough work to increase the capacity of the soil to absorb the rainwater and by overturning the soil, the sharp rays of sun enters the soil and kills the eggs, larvae, and pupae of soil-borne insects and pests.

Weather Based Agro-Advisories: (Sugarcane, Maize & Animal Husbandry).

Sugarcane:

Top dressing with fertilizers will give good results in Sugarcane cultivation.

In the case of the lift irrigation belt, apply 225 kg of nitrogen and 112 ½ kg of K<sub>2</sub>O per hectare in three equal splits during 30, 60 and 90 days.

Maize:

The application of micronutrients will rectify the nutrient deficiency in Maize Cultivation.

Farmers who have planted maize recently can apply 5kg of Millet nutrient mixture or 10 kg of ZnSo<sub>4</sub> per acre.

Also, apply Farm Yard Manure mixed with 2kgs of Azospirillum and 2kgs of Phosphobacteria per acre.

Animal Husbandry:

Provide B-Complex liquid supplementation through drinking water to poultry birds to combat heat stress.

Farmers are advised to reduce the number of birds in a unit area of poultry shed to overcome the heat stress.

## **Pudukottai**

SMS Advisory Chances of Moderate rain during 16, 17, 18 & 19 May .Maximum temperature would be in the range of 34°C to 38°C and the minimum temperature would be between 24°C - 28°C. Cloudy sky will appear for the next five days. Wind is expected with the speed of 8-14 Kmph from, Northeast, Southeast, South & Southwest directions.

General Advisory:

Heavy rain is likely to occur at isolated places over the district during 17, 18 & 19 May 2024. Farmers are advised to act swiftly to repair the water channels, farm ponds and other water bodies to harvest the rain water. During these days farmers are advised to avoid irrigation, intercultural operations and application of plant protection measures to the standing crops, provide adequate drainage facilities in the fields to avoid water stagnation due to heavy rainfall, do not allow the animals to grazing outside, standing near the trees or electric poles & provide safe shelter

Thunderstorms & lightning with light to Moderate rain are likely to occur at one or two places over the Tamilnadu during 15 to 19 May 2024. Gusty Wind with a speed of 30 to 50 kmph is expected for the same days. Hence farmers are advised to provide propping in sugarcane and to provide adequate support for crops like Banana, Papaya, Guava and Moringa, to prevent from lodging. For Gourds check the structures /pandhals for damages in the strings and poles and provide adequate support. Do not allow the animals to graze outside, standing near the trees, and don't tie the animals to electric poles. Provide safe shelter.

Rainfall occurred in a few places during the past few days, and rain is also forecasted for the coming days, farmers are advised to start summer plough work to increase the capacity of the soil to absorb the rainwater and by overturning the soil, the sharp rays of sun enters the soil and kills the eggs, larvae, and pupae of soil-borne insects and pests.

Weather Based Agro-Advisories: (Bhendi, Black gram & Animal Husbandry).

**Bhendi:**

The incidence of Red cotton bug noticed in Bhendi. Infested seeds become discoloured and shrivelled.

To manage this, conserve the biocontrol agent *Harpactorcostalis predaceous* on nymphs and adults and spray *Beaveria Bassiana* @ 600ml per acre.

**Black gram:**

Foliar spray of TNAU Pulse Wonder @ 2 kg/acre in 200 litres of water at flower initiation stage decreases flower shedding, increases yield and moisture stress tolerance. in summer black gram

**Animal Husbandry:**

Provide B-Complex liquid supplementation through drinking water to poultry birds to combat heat stress.

Farmers are advised to reduce the number of birds in a unit area of poultry shed to overcome the heat stress.

## **Ramanathapuram**

**SMS Advisory** Chances of Moderate rain during 16, 17 & 18 May .Maximum temperature would be in the range of 32°C to 37°C and the minimum temperature would be between 21°C - 25°C. Cloudy sky will appear for the next five days. Wind is expected with the speed of 10-20 Kmph from, Southeast, South & Southwest directions.

**General Advisory:**

Heavy rain is likely to occur at isolated places over the district on 16 & 17 May 2024. Farmers are advised to act swiftly to repair the water channels, farm ponds and other water bodies to harvest the rain water. During these days farmers are advised to avoid irrigation, intercultural operations and application of plant protection measures to the standing crops, provide adequate drainage facilities in the fields to avoid water stagnation due to heavy rainfall, do not allow the animals to grazing outside, standing near the trees or electric poles & provide safe shelter.

Thunderstorms & lightning with light to Moderate rain are likely to occur at one or two places over the Tamilnadu during 15 to 19 May 2024. Gusty Wind with a speed of 30 to 50 kmph is expected for the same days. Hence farmers are advised to provide propping in sugarcane and to provide adequate support for crops like Banana, Papaya, Guava and Moringa, to prevent from lodging. For Gourds check the structures /pandhals for damages in the strings and poles and provide adequate support. Do not allow the animals to graze outside, standing near the trees, and don't tie the animals to electric poles. Provide safe shelter.

Rainfall occurred in a few places during the past few days, and rain is also forecasted for the coming days, farmers are advised to start summer plough work to increase the capacity of the soil to absorb the rainwater and by overturning the soil, the sharp rays of sun enters the soil and kills the eggs, larvae, and pupae of soil-borne insects and pests.

**Weather Based Agro-Advisories: (Coconut, Jasmine & Animal Husbandry).**

**Coconut:**

Hook out the beetles using a long iron rod and kill them at the time of harvest.  
Apply 3 naphthalene balls/palm with 100g sand at the crown of the tree once in 45 days to control the Rhinoceros Beetle.

Jasmine:

There are chances of nematode infection in Jasmine fields.

Farmers are advised to test the soil for nematode infection.

The infestation leads to the yellowing of leaf colour and ultimately drying.

To control this, apply Paecilomyces lilacinus @ 4 Kg per acre near the root zone and then irrigate the field.

Animal Husbandry:

Provide B-Complex liquid supplementation through drinking water to poultry birds to combat heat stress.

Farmers are advised to reduce the number of birds in a unit area of poultry shed to overcome the heat stress.

## **Sivagangai**

SMS Advisory Chances of Moderate rain during 15, 16, 17 & 18 May .Maximum temperature would be in the range of 33°C to 38°C and the minimum temperature would be between 22°C - 26°C. Cloudy sky will appear for the next five days. Wind is expected with the speed of 10-12 Kmph from, Northeast, Southeast, South & Southwest directions.

General Advisory:

Heavy rain is likely to occur at isolated places over the district on 18 May 2024. Farmers are advised to act swiftly to repair the water channels, farm ponds and other water bodies to harvest the rain water. During these days farmers are advised to avoid irrigation, intercultural operations and application of plant protection measures to the standing crops, provide adequate drainage facilities in the fields to avoid water stagnation due to heavy rainfall, do not allow the animals to grazing outside, standing near the trees or electric poles & provide safe shelter.

Thunderstorms & lightning with light to Moderate rain are likely to occur at one or two places over the Tamilnadu during 15 to 19 May 2024. Gusty Wind with a speed of 30 to 50 kmph is expected for the same days. Hence farmers are advised to provide propping in sugarcane and to provide adequate support for crops like Banana, Papaya, Guava and Moringa, to prevent from lodging. For Gourds check the structures /pandhals for damages in the strings and poles and provide adequate support. Do not allow the animals to graze outside, standing near the trees, and don't tie the animals to electric poles. Provide safe shelter.

Rainfall occurred in a few places during the past few days, and rain is also forecasted for the coming days, farmers are advised to start summer plough work to increase the capacity of the soil to absorb the rainwater and by overturning the soil, the sharp rays of sun enters the soil and kills the eggs, larvae, and pupae of soil-borne insects and pests.

Weather Based Agro – Advisories: (Important Crops: Coconut, Banana & Animal Husbandry)

#### Coconut:

Kind attention to coconut farmers, Button shedding is noticed in coconut fields.

To control button shedding, farmers are advised to go with the root feeding of Coconut Tonic of TNAU @ 200ml/Tree. This can be continued at 6-month intervals.

#### Banana:

It is important to apply micronutrients to Banana crops planted in garden land, spraying of Plantozyme @ 2ml/litre of water is recommended.

Similarly, Acid lime and Zinc Sulphate @ 5gm/litre of water can also be sprayed at this stage.

#### Animal Husbandry:

Provide B-Complex liquid supplementation through drinking water to poultry birds to combat heat stress.

Farmers are advised to reduce the number of birds in a unit area of poultry shed to overcome the heat stress.

## Theni

SMS Advisory Chances of Moderate rain during 15, 16, 17, 18 & 19 May. Maximum temperature would be in the range of 30°C to 34°C and the minimum temperature would be between 21°C - 25°C. Cloudy sky will appear for the next five days. Wind is expected with the speed of 4-10 Kmph from, Northeast, Southwest & West directions.

#### General Advisory:

Heavy rain is likely to occur at isolated places over the district during 15, 16, 17 & 18 May 2024. Farmers are advised to act swiftly to repair the water channels, farm ponds and other water bodies to harvest the rain water. During these days farmers are advised to avoid irrigation, intercultural operations and application of plant protection measures to the standing crops, provide adequate drainage facilities in the fields to avoid water stagnation due to heavy rainfall, do not allow the animals to grazing outside, standing near the trees or electric poles & provide safe shelter.

Thunderstorms & lightning with light to Moderate rain are likely to occur at one or two places over the Tamilnadu during 15 to 9May 2024. Gusty Wind with a speed of 30 to 50 kmph is expected for the same days. Hence farmers are advised to provide propping in sugarcane and to provide adequate support for crops like Banana, Papaya, Guava and Moringa, to prevent from lodging. For Gourds check the structures /pandhals for damages in the strings and poles and provide adequate support. Do not allow the animals to graze outside, standing near the trees, and don't tie the animals to electric poles. Provide safe shelter.

Rainfall occurred in a few places during the past few days, and rain is also forecasted for the coming days, farmers are advised to start summer plough work to increase the capacity of the soil to absorb the rainwater and by overturning the soil, the sharp rays of sun enters the soil and kills the eggs, larvae, and pupae of soil-borne insects and pests

#### Weather Based Agro-Advisories: (Mango, Grapes & Animal Husbandry)

##### Mango:



It is important to control the flower and finches shedding in Mango crops. It is also essential to follow the yield-increasing practices in Mango.

To increase fruit retention, farmers are advised to spray, NAA @ 20ppm at the flowering stage.

If the trees do not flower, by that time, to induce the flowering, spray any one of the following, 0.5% Urea (5g/lit.) OR 1% Potassium Nitrate (10g/lit.).

Grapes:

Prevailing weather is suitable for pruning in grape fields. In general, four-bud level pruning can be adopted for Muscat, Green grapes, and hybrids, and two-bud level pruning for Thompson Seedless.

It is better to decide the level of pruning as per the bud forecasting technique. Weak and immature canes should be pruned with one or two buds to induce vegetative growth.

Pruning can be done during May & June months for monsoon crops.

Animal Husbandry:

Provide B-Complex liquid supplementation through drinking water to poultry birds to combat heat stress.

Farmers are advised to reduce the number of birds in a unit area of poultry shed to overcome the heat stress.

## Salem

Weather Advisory Bulletin for livestock, poultry and agro advisory

| Livestock, Poultry & Crop               | Stage            | Weather advisory  |
|---|------------------|---|
| Livestock                               | General          | Worm Parasites and their control in Small ruminants and Calves<br>Due to summer rains in different regions, the micro environment for survival of infective stage of strogyle nematodes and grassmite intermediate host for tapeworms would be very congenial and hence susceptible, particularly young animals likely to get infected. The affected stocks will have the symptoms of anorexia, stunted growth, diarrhoea, anaemia and submandicular oedema in haematophagus nematode infection, while in severe cases mortality may occur, resulting in economic losses to the farming community. To prevent this economic losses associated with worm burden, faecal samples may be screened and infected animals may be dewormed. Avoid taking the animals for grazing in the early morning. |
| Agro advisory from Krishi Vigyan Kendra |                  |   |
| Crops                                   | General          | Farmers are requested to do ploughing by utilizing the current rainfall and also make bund around the field to conserve the rainfall.   |
| Tapioca                                 | Vegetative stage | Tapioca farmers are requested to utilize the rainfall by applying top dressing of fertilizers and well decomposed farm yard manure to 4 – 5 months old tapioca crops. After manuring it is advised to do earthing up operation.   |
| Green gram                              | Sowing stage     | Farmers are advised to take up sowing of Green gram (Varieties CO 8 and VBN 7) in current season under rainfed and irrigated condition. Seed treatment should be done with bioagents like bacillus subtilis and trichoderma viride 10 gram / kg of seed before sowing.  |
| Sugarcane                               | Vegetative stage | To alleviate the micronutrient deficiency as well as to improve the yield of ratoon sugarcane, foliar spraying with sugarcane booster @ 1 kg / acre 45 days after planting, @1.5 kg / acre 60 days after planting and @ 2 kg / acre 75 days after planting in 200   |

|         |                  |  |
|---------|------------------|--|
|         |                  | liters of water along with sticking agent can be undertaken.   |
| Coconut | Vegetative stage | Rugose spiraling whitefly incidence was noticed in Coconut. It can be managed by spraying Neem oil 5 ml with 1.5 ml sticking agent using power gun sprayer and placing yellow sticky trap of 3 ft X 1.5ft @ 10 numbers / acre.<br>Sooty mould can be controlled by spraying starch solution and allowing chrysoperla insect feeder @ 400 numbers and Encarsia parasitoid @ 100 / acre.<br>Avoid using chemical pesticides. |

## Namakkal

### Weather Advisory Bulletin for livestock, poultry and agriculture

| Livestock, Poultry & Crop                           | Stage            | Weather advisory  |
|---|------------------|---|
| Livestock   | General          | Worm Parasites and their control in Small ruminants and Calves<br>Due to summer rains in different regions, the micro environment for survival of infective stage of strogyle nematodes and grassmite intermediate host for tapeworms would be very congenial and hence susceptible, particularly young animals likely to get infected. The affected stocks will have the symptoms of anorexia, stunted growth, diarrhoea, anaemia and submandicular oedema in haematophagus nematode infection, while in severe cases mortality may occur, resulting in economic losses to the farming community. To prevent this economic losses associated with worm burden, faecal samples may be screened and infected animals may be dewormed. Avoid taking the animals for grazing in the early morning. |
| Agro advisory from Krishi Vigyan Kendra, Namakkal : |                  |   |
| Crops   | General          | Farmers are requested to do ploughing by utilizing the current rainfall and also make bund around the field to conserve the rainfall.   |
| Tapioca   | Vegetative stage | Tapioca farmers are requested to utilize the rainfall by applying top dressing of fertilizers and well decomposed farm yard manure to 4 – 5 months old tapioca crops. After manuring it is advised to do earthing up operation.   |
| Green gram  | Sowing stage     | Farmers are advised to take up sowing of Green gram (Varieties CO 8 and VBN 7) in current season under rainfed and irrigated condition. Seed treatment should be done with bioagents like bacillus subtilis and trichoderma viride 10 gram / kg of seed before sowing.  |
| Sugarcane   | Vegetative stage | To alleviate the micronutrient deficiency as well as to improve the yield of ratoon sugarcane, foliar spraying with sugarcane booster @ 1 kg / acre 45 days after planting, @1.5 kg / acre 60 days after planting and @ 2 kg / acre 75 days after planting in 200 liters of water along with sticking agent can be undertaken.  |
| Coconut   | Vegetative stage | Rugose spiraling whitefly incidence was noticed in Coconut. It can be managed by spraying Neem oil 5 ml with 1.5 ml sticking agent using power gun sprayer and placing yellow sticky trap of 3 ft X 1.5ft @ 10 numbers / acre.<br>Sooty mould can be controlled by spraying starch solution and allowing chrysoperla insect feeder @ 400 numbers and Encarsia parasitoid @ 100 / acre.<br>Avoid using chemical pesticides.  |

## Dharmapuri

### Weather Advisory Bulletin for livestock, poultry and agriculture

| Livestock, Poultry & Crop               | Stage            | Weather advisory   |
|---|------------------|--|
| Livestock                               | General          | <p>Worm Parasites and their control in Small ruminants and Calves</p> <p>Due to summer rains in different regions, the micro environment for survival of infective stage of strogyle nematodes and grassmite intermediate host for tapeworms would be very congenial and hence susceptible, particularly young animals likely to get infected. The affected stocks will have the symptoms of anorexia, stunted growth, diarrhoea, anaemia and submandicular oedema in haematophagus nematode infection, while in severe cases mortality may occur, resulting in economic losses to the farming community. To prevent this economic losses associated with worm burden, faecal samples may be screened and infected animals may be dewormed. Avoid taking the animals for grazing in the early morning.</p> |
| Agro advisory from Krishi Vigyan Kendra |                  |  |
| Crops                                   | General          | Farmers are requested to do ploughing by utilizing the current rainfall and also make bund around the field to conserve the rainfall.  |
| Tapioca                                 | Vegetative stage | Tapioca farmers are requested to utilize the rainfall by applying top dressing of fertilizers and well decomposed farm yard manure to 4 – 5 months old tapioca crops. After manuring it is advised to do earthing up operation.  |
| Green gram                              | Sowing stage     | Farmers are advised to take up sowing of Green gram (Varieties CO 8 and VBN 7) in current season under rainfed and irrigated condition. Seed treatment should be done with bioagents like bacillus subtilis and trichoderma viride 10 gram / kg of seed before sowing.   |
| Sugarcane                               | Vegetative stage | To alleviate the micronutrient deficiency as well as to improve the yield of ratoon sugarcane, foliar spraying with sugarcane booster @ 1 kg / acre 45 days after planting, @1.5 kg / acre 60 days after planting and @ 2 kg / acre 75 days after planting in 200 liters of water along with sticking agent can be undertaken.   |
| Coconut                                 | Vegetative stage | <p>Rugose spiraling whitefly incidence was noticed in Coconut. It can be managed by spraying Neem oil 5 ml with 1.5 ml sticking agent using power gun sprayer and placing yellow sticky trap of 3 ft X 1.5ft @ 10 numbers / acre.</p> <p>Sooty mould can be controlled by spraying starch solution and allowing chrysoperla insect feeder @ 400 numbers and Encarsia parasitoid @ 100 / acre.</p> <p>Avoid using chemical pesticides.</p>  |

## Krishnagiri

### Weather Advisory Bulletin for livestock, poultry and agriculture

| Livestock, Poultry & Crop | Stage | Weather advisory |
|---------------------------|-------|------------------|
|---------------------------|-------|------------------|

|   |                  |  |
|---|------------------|--|
| Livestock                               | General          | <p>Worm Parasites and their control in Small ruminants and Calves</p> <p>Due to summer rains in different regions, the micro environment for survival of infective stage of strogyle nematodes and grassmite intermediate host for tapeworms would be very congenial and hence susceptible, particularly young animals likely to get infected. The affected stocks will have the symptoms of anorexia, stunted growth, diarrhoea, anaemia and submandicular oedema in haematophagus nematode infection, while in severe cases mortality may occur, resulting in economic losses to the farming community. To prevent this economic losses associated with worm burden, faecal samples may be screened and infected animals may be dewormed. Avoid taking the animals for grazing in the early morning.</p> |
| Agro advisory from Krishi Vigyan Kendra |                  |  |
| Crops                                   | General          | Farmers are requested to do ploughing by utilizing the current rainfall and also make bund around the field to conserve the rainfall.  |
| Tapioca                                 | Vegetative stage | Tapioca farmers are requested to utilize the rainfall by applying top dressing of fertilizers and well decomposed farm yard manure to 4 – 5 months old tapioca crops. After manuring it is advised to do earthing up operation.  |
| Green gram                              | Sowing stage     | Farmers are advised to take up sowing of Green gram (Varieties CO 8 and VBN 7) in current season under rainfed and irrigated condition. Seed treatment should be done with bioagents like bacillus subtilis and trichoderma viride 10 gram / kg of seed before sowing.   |
| Sugarcane                               | Vegetative stage | To alleviate the micronutrient deficiency as well as to improve the yield of ratoon sugarcane, foliar spraying with sugarcane booster @ 1 kg / acre 45 days after planting, @1.5 kg / acre 60 days after planting and @ 2 kg / acre 75 days after planting in 200 liters of water along with sticking agent can be undertaken.   |
| Coconut                                 | Vegetative stage | Rugose spiraling whitefly incidence was noticed in Coconut. It can be managed by spraying Neem oil 5 ml with 1.5 ml sticking agent using power gun sprayer and placing yellow sticky trap of 3 ft X 1.5ft @ 10 numbers / acre.<br>Sooty mould can be controlled by spraying starch solution and allowing chrysoperla insect feeder @ 400 numbers and Encarsia parasitoid @ 100 / acre.<br>Avoid using chemical pesticides.   |

## Kanyakumari

### AGRO ADVISORIES

| S. N. | CROP                 | STAGES         | ADVISORIES   |
|-------|----------------------|----------------|--|
| 1.    | Horticultural crops. | Planting stage | As 06 to 18 km / hr wind speed is anticipated, it is advised to provide staking to newly planted horticultural plants. |

|    |                                       |                  |   |
|----|---------------------------------------|------------------|---|
| 2. | Agricultural and Horticultural crops. | All stages       | Spraying of insecticides, weedicides and application of fertilizer should be postponed due to rain.                               |
| 3. | Flowers                               | All stages.      | Provide proper drainage facilities to prevent rain water stagnation.  |
| 4. | Banana                                | Harvesting stage | Harvested banana bunches should be stored in dry places to prevent disease incidence due to rainfall.                             |
| 5. | Rubber                                | Tapping Stage    | Fix a polythene rain guard to the trunk of the tree above the tapping panel so that tapping can be done during rainy season also. |
| 6. | Tapioca                               | All stages       | Drainage facilities have to be provided to prevent water logging as it invites pathogens.   |
| 7. | Coconut                               | All stages       | Provide the proper drainage in coconut field to avoid fungus root damage.   |

#### SMS Advisory

As rainfall is expected, proper drainage facilities should be given to young rubber, banana and fruit trees.

### Tenkasi

| Crop            | Stage                 | Agromet Advisory   |
|-----------------|-----------------------|--|
| Irrigated crops | Water management      | Rainfall is predicted. Farmers are request to postpone the irrigation. Excavate proper drainage channel to avoid water stagnation. |
| Irrigated crops | Plant protection      | Avoid spraying.  |
| Summer          | Moisture conservation | Farmers are requested for summer ploughing to hold the anticipated   |

|            |                          |  |
|------------|--------------------------|--|
| ploughing  |                          | rainfall.  |
| Paddy      | Vegetative stage         | Maintain the water level to avoid lodging of crop.   |
|            | Flowering stage          |  |
|            | Panicle initiation stage |  |
| Vegetables | Rainfall                 | Harvest the products as earlier to avoid the rainfall damage   |
| Black gram | Flowering stage          | Proper drainage channel to avoid water stagnation.   |
| Banana     | All the stage            | Farmers are advised to practice propping and earthing up.  |
| Livestock  | Rainfall and thunder     | Proper shelter to be maintained to avoid entry of rainfall and disease spread. Keep animals away from open water, pond or river. |
| Human      |                          | Avoid shelter under trees and Crouch down with feet together and head down to make yourself a smaller target.                    |

SMS: Rain: 15-19.05-36,29,35,33&6 mm. Postpone the irrigation and spraying. Excavate proper drainage channel. Banana - practice propping and earthing up. Avoid shelter under trees and metal farm equipment.

## Karaikal

### Agro Advisory

| Crop/livestock | Stage/Particulars              | Agro Advisory  |
|----------------|--------------------------------|--|
| General        | Summer ploughing               | Summer showers may be utilized and summer ploughing may be done to increase soil moisture and to control weeds, pest and diseases.   |
| Cotton         | Vegetative and flowering stage | Cloudy weather with rain may increase the shedding of buds and squares in cotton. To prevent early shedding of buds and squares in cotton spray 40 ppm NAA (40 mg of Naphthalene Acetic Acid in one litre of water) at 60 and 90 DAS on the crops. |
|                |                                | Nipping may be done at 15th node for variety and 20th node for hybrid cotton to induce sympodial branches development.   |

SMS: Light to moderate rain is expected from 15th to 19th May.

## Puducherry

### Agro Advisory

| Crop | Stage/Particulars | Agro Advisory   |
|------|-------------------|---|
| Rice | Tillering stage   | To manage rice stem borer, release parasitoid <i>Trichogramma japonicum</i> @1,00,000/ha at active tillering stage (37, 44 and 51 DAP) or Azadirachtin 0.03% @ 4 ml/l or cartaphydrochloride 50% SP @ 2g/l or flubendiamide 20 WG @ 0.25 g/l or thiamethoxam 25 WG @ 0.2 g/l. |

|           |                 |   |
|-----------|-----------------|---|
|           |                 | <p>To manage rice leaf folder release <i>Trichogramma chilonis</i> 5cc (1,00,000/ha) at 37, 44, 51 day after planting.</p> <p>Avoid excess application of nitrogen fertilizers.</p> <p>Setup light trap to attract adult moths.</p> <p>Setup T- shaped bird perches for predatory birds to control these pests.</p> <p>Apply cartaphydrochloride 50% SP @ 2g/l or flubendiamide 20 WG @ 0.25 g/l or thiamethoxam 25 WG @ 0.2 g/l.</p>   |
| Gourds    | Flowering stage | <p>Spray ethrel @ 100 ppm (1 ml/10 litres of water) in snake gourd and bitter gourd and @ 250 ppm (2.5 ml/10 litres of water) in ribbed gourd, four times commencing from 15th day after sowing at weekly intervals to increase female flowers.</p>   |
| Livestock | Heat stress     | <p>Heat stress is likely to occur in cattle due to prevailing hot weather. Therefore, following steps can be followed to protect livestock from summer heat.</p> <p>Cattle can be protected from heat by spreading straw, dry grass, palm fronds, coconut leaves or coir waste on the surface of cattle sheds and sprinkling water over it.</p> <p>Cattle can be sent for grazing between 06 am to 10 am and 04 pm to 06 pm.</p> <p>Roofs should be erected over the drinking troughs for livestock to provide cold drinking water to the livestock.</p> <p>Cattle should be bathed twice daily.</p> <p>If cattle show signs of heat stress such as excessive drinking of water, rapid breathing, excessive salivation, loss of appetite, shivering and falling down, then the affected animals should be treated at the nearest veterinary hospital.</p> |

## Block Level

### **Coonoor, Kotagiri and Udthagamandalam**

#### General Advisory:

Moderate rainfall is expected for next five day hence vegetable farmer's are requested to do drainage facilities drain the excess water in vegetable field. Seeds can be treated with *Trichoderma viride* @ 4g/kg or *Bacillus subtilis* @ 10g/kg to manage seed and soil borne pathogens. Further, soil testing has to be done before any cropping programme.

#### SMS Advisory:

To manage leaf spot in Beetroot crop, foliar spray of mancozeb @ 2 g/l on 45, 60 and 75 days after planting is recommended. Spray may be given during rain free period.

#### Horticulture Specific Advisory:

|                         |                                |
|-------------------------|--------------------------------|
| Horticulture(Varieties) | Horticulture Specific Advisory |
|-------------------------|--------------------------------|

|              |   |
|--------------|---|
| CARROT       | For the management of nematode in carrot, soil application of neem cake @ 1 ton/ha at planting. Biofumigation of mustard plants followed by application of neem cake @ 250kg/ha along with Purpureocillium lilacinum @ 5kg/ha is recommended. Spray may be given during rain free period.   |
| POTATO       | To manage early blight in potato, foliar application of hexaconazole 2% SC @ 0.06% or mancozeb @ 2 g/l or chlorothalonil @ 2 g/l at 45, 60 and 75 days after planting is recommended. Spray may be given during rain free period.   |
| BLACK PEPPER | To manage wilt in pepper, farmers are advised to do the application of copper oxychloride @ 0.2 % (soil drenching) or potassium phosphonate @ 0.3% or metalaxyl @ 0.1 % is recommended. Spray may be given during rain free period.   |
| TEA          | To manage mites in tea crop, foliar application of Azadirachtin 1.0% EC (neem based) 2.0 ml/lit or propargite 57 % EC 2.0 ml/lit is recommended. Spray may be given during rain free period.  |
| GARLIC       | Foliar application of water-soluble micronutrient mixture @ 0.5 g/liter of water during 30, 45 and 60 days after planting may be done to increase the Garlic bulb yield. To manage leaf spot / purple blotch in garlic crop, foliar application of mancozeb @ 2 g/l or copper oxychloride @ 2.5 g/l is recommended. Spray may be given during rain free period. |

## Gudalur

### General Advisory:

Moderate rainfall is expected for next five day hence vegetable farmer's are requested to do drainage facilities drain the excess water in vegetable field. Seeds can be treated with Trichoderma viride @ 4g/kg or Bacillus subtilis @ 10g/kg to manage seed and soil borne pathogens. Further, soil testing has to be done before any cropping programme.

### SMS Advisory:

To manage mites in tea crop, foliar application of Azadirachtin 1.0% EC (neem based) 2.0 ml/lit or propargite 57 % EC 2.0 ml/lit is recommended. Spray may be given during rain free period.

### Horticulture Specific Advisory:

| Horticulture(Varieties) | Horticulture Specific Advisory  |
|-------------------------|---|
| BLACK PEPPER            | To manage wilt in pepper, farmers are advised to do the application of copper oxychloride @ 0.2 % (soil drenching) or potassium phosphonate @ 0.3% or metalaxyl @ 0.1 % is recommended. Spray may be given during rain free period. |

=====